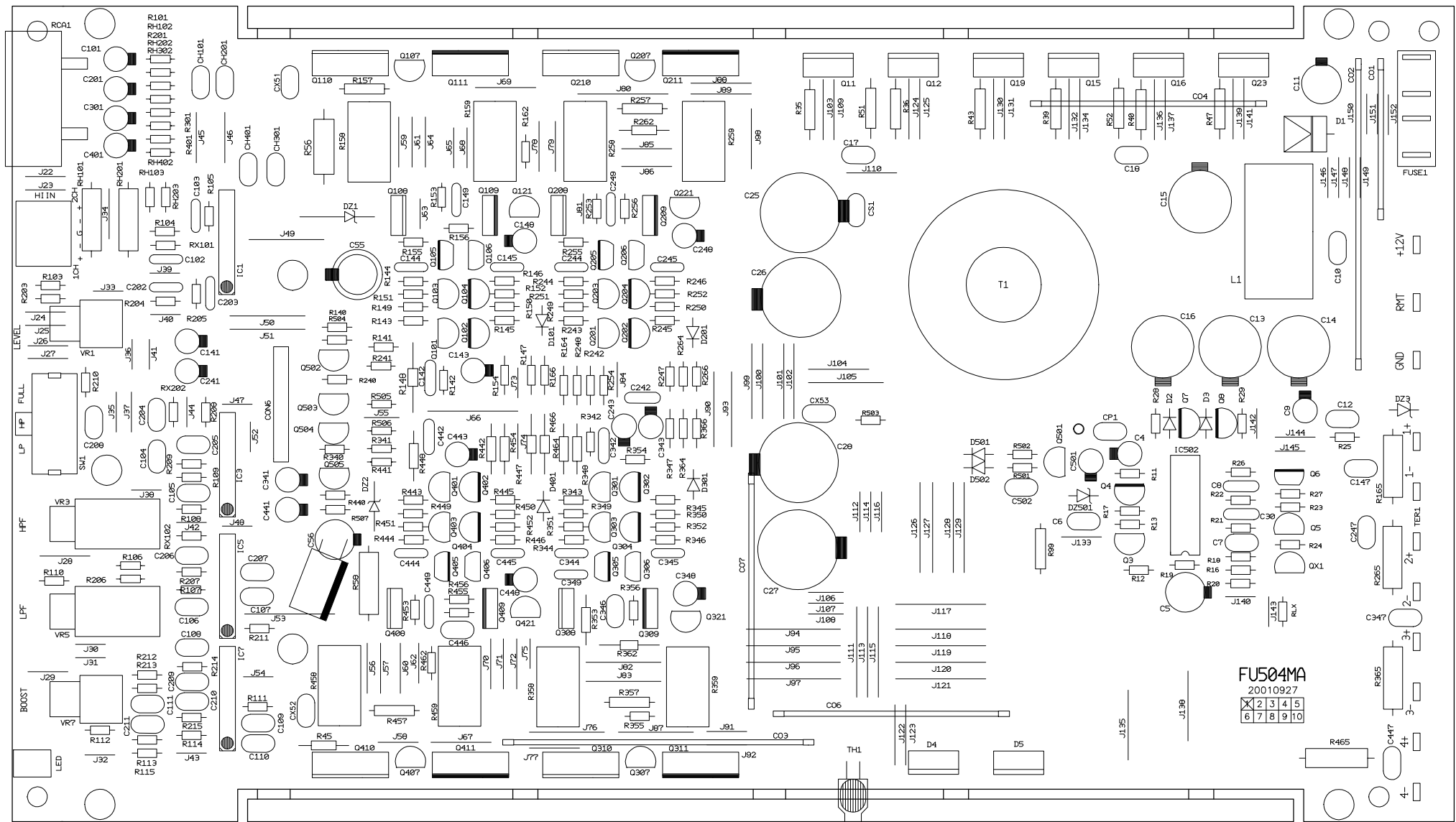
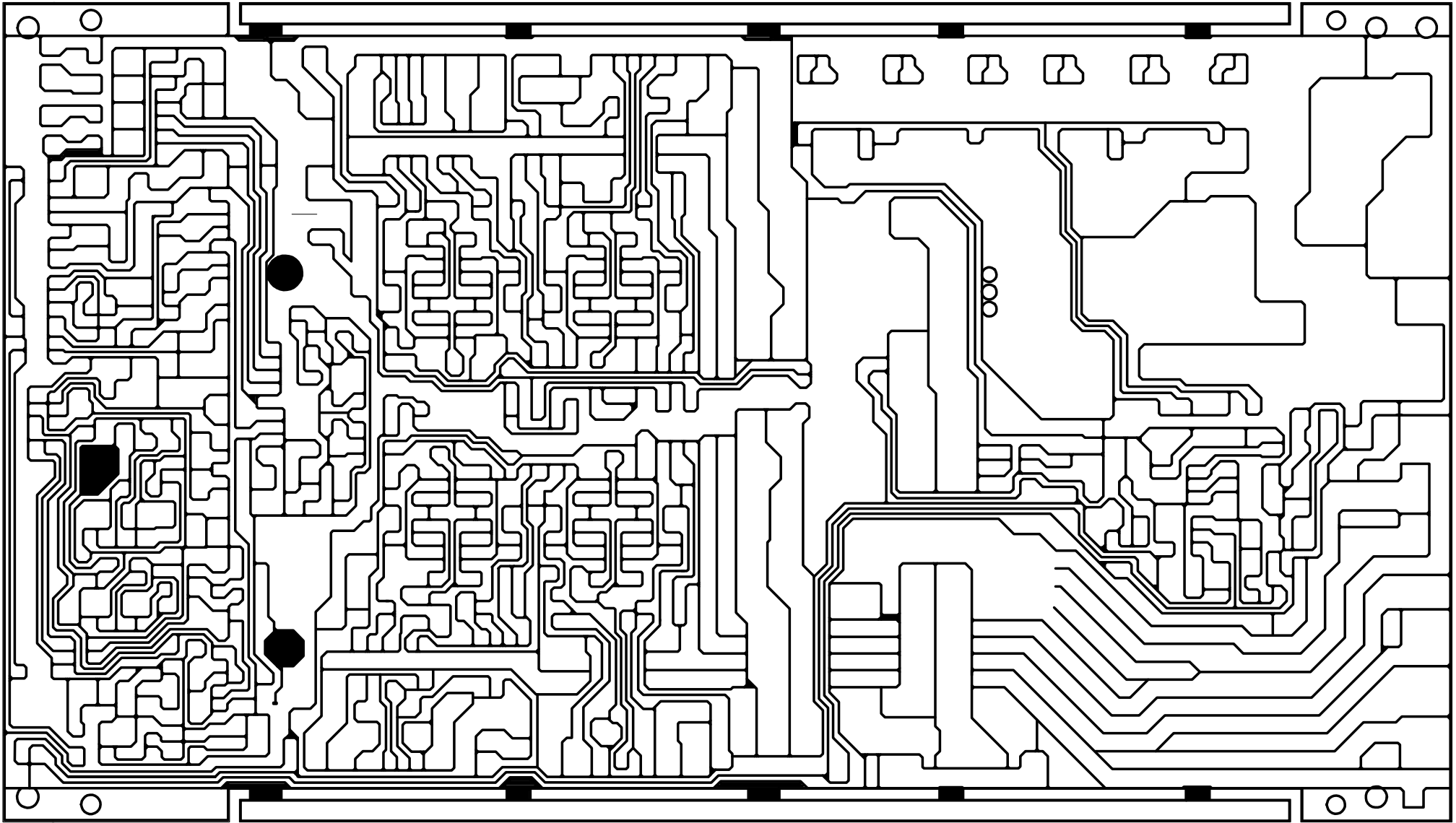


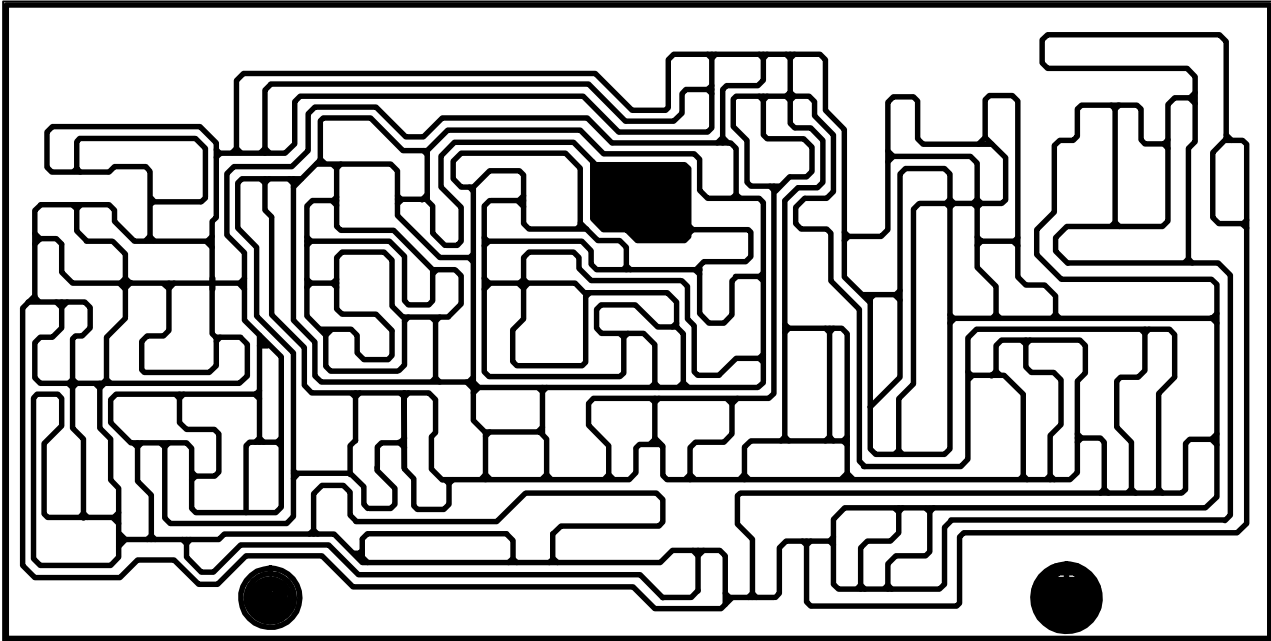
DRPM	DESIGN	CHECK	APPROV	DATE	23. AUG. 2004
SCALE	1/1	UNIT	MM		
MODEL					
DRPM NO.	D-E-GR9604-00				



CHECKED DATE		APPROVED DATE		TITLE	
				SIZE	NUMBER
				A3	D-B-GA9604MTS-00
				DATE:2004-07-23	DRAWN BY :C.Y.WON
				FILE NAME:	Sheet : 1/ 1
					REV
					0



		TITLE		
CHECKED DATE		APPROVED DATE		REV
		SIZE	NUMBER	
		A3	D-B-GA9604MBP-00	0
		DATE:2004-07-23		DRAWN BY :C.Y.WON
		FILE NAME:		Sheet : 1 / 1



			TITLE		
CHECKED DATE		APPROVED DATE	SIZE	NUMBER	REV
			A3	D-B-GA9604VBP-00	0
			DATE: 2004-07-23		DRAWN BY :C.Y.WON
			FILE NAME:		Sheet : 1 / 1

PART LIST(MR4.75)

* BUYER : DELTA

* MODEL : MR4.75

* CODE :

NO	CODE	NAME	STAN	Q'TY	REMARK
1	B-FLUX-----1	FLUX NT2016	@44000 IR410M	3.00	
2	B-IPA-----1	IPA IT330M	15kg:@32000	3.00	
3	B-SLDR-BAR--1	SOLDER BAR 60%	kg:\$7.2 g:\$0.0072	20.00	
4	B-SLDR-WIRE-1	SOLDER WIRE 60%	kg:\$7.09 g:\$0.0071	5.00	
5	B-TUB-EMP1--1	TUBE EMPIRE	1mm/O.O5 @70	90.00	Q107, Q207, Q307, Q407, TH1
6	G-LED-HOLDER6	HOLDER LED ASS'Y	TOH-30FOGD1-B(G/R)	1.00	LED
7	H-COPER-2--3	COPER 2P NI 1t	2P_30mm_10mm(h)	1.00	CO1
8	H-COPER-2--4	COPER 2P NI 1t	2P_45mm_10mm(h)	3.00	CO4, CO6, CO7
9	H-COPER-2--5	COPER 2P NI 1t	2P_60mm_10mm(h)	2.00	CO2, CO3
10	H-DIO-25C---2	DIODE YG225C2	YG225C2 Y=24	1.00	D4
11	H-DIO-25N---2	DIODE YG225N2	YG225N2 Y=24	1.00	D5
12	H-DIO-5402--1	DIODE IN5402		1.00	D1
13	H-DIZ-5W15V-1	DIODE ZENER 5W15V	IN5352B	2.00	DZ1, DZ2
14	H-E13-16SH--2	EC 1000/16 10X16 SHL		2.00	C55, C56
15	H-E223-16KG-1	EC2200/16 12.5x20KMG		4.00	C13, C14, C15, C16
16	H-E223-35SH-1	EC2200/35 16x25 SHL		4.00	C25, C26, C27, C28
17	H-FUS-30A---1	FUSE ATC-30A		2.00	FUSE1x2EA
18	H-FUS-HOPL231	HOLDER FUS DKF-08021	DOUBLE, PCB	1.00	FUSE1
19	H-IC-4560L--1	IC NJM4560L SIP		4.00	IC1, IC3, IC5, IC7
20	H-IC-494CN--1	IC 494CN		1.00	IC502
21	H-JAK-R4PBR-1	JACK RCA 4P BRASS	DKJ44104 W/W	1.00	RCA1
22	H-MOS-44----4	MOSFET FQP50N06	N-CH TO220	6.00	Q11, Q12, Q15, Q16, Q19, Q23
23	H-PTRC-5-23-3	RFC COIL TOROIDE D/N	5UH 23mm 5Px8T	1.00	L1
24	H-PTTO-37---4	P.T TOROIDE 37mm D-N	GTA470 5T/11T	1.00	T1

PART LIST(MR4.75)

* BUYER : DELTA

* MODEL : MR4.75

* CODE :

NO	CODE	NAME	STAN	Q'TY	REMARK
25	H-R14-124---1	RESISTOR 1/4W 1.2K		1.00	
26	H-R1WM-472--2	RESISTOR MET 1W4.7	M TYPE	4.00	R165, R265, R365, R465
27	H-R2WM-270--2	RESISTOR MET 2W270	M TYPE	2.00	R56, R58
28	H-R5WMFR015-1	RESISTOR MFR 5W 0.15	R-TYPE	8.00	R158, R159, R258, R259, R358, R359, R458, R459
29	H-STRG-11PGB2	TERMINAL SCREW _2B	DM111216B 11P BRASS	1.00	TER1
30	H-SWS-2301--7	SW SL SK23E01G8 L3R1	2C3P 8MM	1.00	SW1
31	H-THM-150K--2	THERMISTOR 150K	"LUG"	1.00	TH1
32	H-TR-3112B--1	TR KTC3112B		4.00	Q107, Q207, Q307, Q407
33	H-TR-35C----1	TR TIP35C		4.00	Q110, Q210, Q310, Q410
34	H-TR-36C----1	TR TIP36C		4.00	Q111, Q211, Q311, Q411
35	H-TR-600E---1	TR 2SD600E		4.00	Q108, Q208, Q308, Q408
36	H-TR-631E---1	TR 2SB631E		4.00	Q109, Q209, Q309, Q409
37	H-VR953B20--1	RTVR 3B20K 2GB	RV095GBC015RS3B20K	1.00	VR1
38	H-VR953B500-1	RTVR 3B500K 2GB	RV095GBC015RS3B500K	1.00	VR7
39	H-VR9543B20-1	RTVR 3B20K 4GB	RV0954GBCO15RS3B20K	1.00	VR5
40	H-VR9543B50-1	RTVR 3B50K 4GB	RV0954GBCO15RS3B50K	1.00	VR3
41	H-W16-RT120-2	RING TERMINAL 10mm	0.16/11BK120 3.5x2EA	1.00	GND, CE_GND
42	H-W24-T050--1	9P+9P B/C 50MM	9P W/O WAFER	1.00	CON6
43	H-CER-100CHT1	CER CAP 100PF CH	TP TYPE	12.00	C144, C145, C149, C244, C245, C249, C344, C345,
44	H-CER-100CHT1	CER CAP 100PF CH	TP TYPE	0.00	C349, C444, C445, C449
45	H-CER-104T--1	CER CAP 104PF	TP TYPE	1.00	C10
46	H-CER-18TCH-1	CER CAP 18PF CH	TP TYPE	1.00	C203
47	H-CER-39CHT-1	CER CAP 39P CH	TP TYPE	1.00	C103
48	H-CER-560T--1	CER CAP 560PF	TP TYPE	2.00	C102, C202

PART LIST(MR4.75)

* BUYER : DELTA

* MODEL : MR4.75

* CODE :

NO	CODE	NAME	STAN	Q'TY	REMARK
49	H-DIO-4148--1	DIODE IN4148M		8.00	D2, D3, D101, D201, D301, D401, D501, D502
50	H-DIZ-5.6B--1	DIODE ZENER MTZ5.6B	0.5W	1.00	DZ501
51	H-DIZ-7.5B--1	DIODE ZENER MTZ7.5B	0.5W	1.00	DZ3
52	H-E10-16SRT-1	EC 10/16 4x7 SRA	TP TYPE	4.00	C141, C241, C341, C441
53	H-E10-25SHT-1	EC 10/25 5x11 SHL	TP TYPE	6.00	C148, C248, C348, C448, C501, C4
54	H-E1-50SHT--1	EC 1/50 5x11 SHL	TP TYPE	1.00	C9
55	H-E330-16SHT1	EC 330/16 8x11.5SHL	TP TYPE	2.00	C5, C11
56	H-E33-16SHT-1	EC 33/16 5x11 SHL	TP TYPE	4.00	C143, C243, C343, C443
57	H-E4.7-50SHT1	EC 4.7/50 5X11 SHL	TP TYPE	4.00	C101, C201, C301, C401
58	H-JW-JUMPW06T	JUMP WIRE 0.6T		128.00	
59	H-MFB-104P5T1	CAP/M-FILM 104/63V	BOX FILM 104 TP TYPE	2.00	C111, C211
60	H-MFB-224P5T1	CAP/M-FILM 224/63V	BOX FILM 224 TP TYPE	5.00	C106, C108, C206, C208, CX52
61	H-MYR-102T--2	MYLAR 102(0.001/100)	TP TYPE "J"	5.00	C142, C242, C342, C442, CE1
62	H-MYR-103MT-2	MYLAR 103(0.01/50)	TP TYPE "J" MINI	4.00	C109, C110, C209, C210
63	H-MYR-103T--2	MYLAR 103(0.01/100)	TP TYPE "J"	5.00	C6, C12, C17, C18, C502
64	H-MYR-104MT-2	MYLAR 104(0.1/50)	TP TYPE "J" MINI	3.00	C346, C446, CP1
65	H-MYR-104T--2	MYLAR 104(0.1/100)	TP TYPE "J"	5.00	C147, C247, C347, C447, CS1
66	H-MYR-224MT-2	MYLAR 224(0.22/50)	TP TYPE "J" MINI	2.00	CX51, CX53
67	H-MYR-472T--2	MYLAR 472(0.0047/100)	TP TYPE "J"	2.00	C8, C30
68	H-MYR-473T--2	MYLAR 473(0.047/100)	TP TYPE "J"	1.00	C7
69	H-MYR-563MT-2	MYLAR 563(0.056/50)	TP TYPE "J" MINI	2.00	C104, C204
70	H-MYR-823MT-2	MYLAR 823(0.082/50)	TP TYPE "J" MINI	4.00	C105, C107, C205, C207
71	H-PBA-9504FU2	MAIN PCB FU504MA	288x163x1.6t XPC	1.00	COLOR:BLUE
72	H-R12-27----1	RESISTOR 1/2W 27		2.00	R51, R52

PART LIST(MR4.75)

* BUYER : DELTA

* MODEL : MR4.75

* CODE :

NO	CODE	NAME	STAN	Q'TY	REMARK
73	H-R14-13----1	RESISTOR 1/4W 1K		1.00	R99
74	H-R14-220---1	RESISTOR 1/4W 220		4.00	R157, R257, R357, R457
75	H-R14-47----1	RESISTOR 1/4W 47		6.00	R35, R36, R39, R40, R43, R47
76	H-R18-100---1	RESISTOR 1/8W 100		16.00	R143, R144, R145, R146, R243, R244, R245, R246,
77	H-R18-100---1	RESISTOR 1/8W 100		0.00	R343, R344, R345, R346, R443, R444, R445, R446
78	H-R18-1003--1	RESISTOR 1/8W 100K		10.00	R113, R114, R115, R213, R214, R215, R504, R505,
79	H-R18-1003--1	RESISTOR 1/8W 100K		0.00	R506, R507
80	H-R18-103---1	RESISTOR 1/8W 10K		16.00	R110, R166, R204, R210, R266, R366, R466, R501,
81	H-R18-103---1	RESISTOR 1/8W 10K		0.00	R502, R11, R16, R17, R20, R24, R25, RX101
82	H-R18-123---1	RESISTOR 1/8W 12K		6.00	R153, R253, R353, R453, R22, R18
83	H-R18-13----1	RESISTOR 1/8W 1K		24.00	R12, R23, R28, R29, R140, R141, R149, R150,
84	H-R18-13----1	RESISTOR 1/8W 1K		0.00	R154, R240, R241, R249, R250, R254, R340, R341,
85	H-R18-13----1	RESISTOR 1/8W 1K		0.00	R349, R354, R350, R440, R441, R449, R450, R454
86	H-R18-1503--1	RESISTOR 1/8W 150K		2.00	R111, R211
87	H-R18-1-----6	RESISTOR 1/8W 1M		1.00	R19
88	H-R18-184---1	RESISTOR 1/8W 1.8K		4.00	R156, R256, R356, R456
89	H-R18-223---1	RESISTOR 1/8W 22K		5.00	R142, R21, R242, R342, R442
90	H-R18-224---1	RESISTOR 1/8W 2.2K		2.00	R13, R45
91	H-R18-33----1	RESISTOR 1/8W 3K		1.00	R26
92	H-R18-333---1	RESISTOR 1/8W 33K		3.00	R105, R112, R212
93	H-R18-334---1	RESISTOR 1/8W 3.3K		4.00	R101, R201, R301, R401
94	H-R18-394---1	RESISTOR 1/8W 3.9K		4.00	R164, R264, R364, R464
95	H-R18-47----1	RESISTOR 1/8W 47		8.00	R151, R152, R251, R252, R351, R352, R451, R452
96	H-R18-474---1	RESISTOR 1/8W 4.7K		8.00	R27, R108, R155, R208, R255, R355, R455, RLX

PART LIST(MR4.75)

* BUYER : DELTA

* MODEL : MR4.75

* CODE :

NO	CODE	NAME	STAN	Q'TY	REMARK
97	H-R18-564---1	RESISTOR 1/8W 5.6K		2.00	R106, R206
98	H-R18-680---1	RESISTOR 1/8W 680		6.00	R103, R203, R162, R262, R362, R462
99	H-R18-824---1	RESISTOR 1/8W 8.2K		8.00	R147, R148, R247, R248, R347, R348, R447, R448
100	H-R18F-1374-1	RESISTOR F1/8W 13.7K		2.00	R109, R209
101	H-R18F-4322-1	RESISTOR F1/8W 4.32K		2.00	R107, R207
102	H-R18F-4994-1	RESISTOR F1/8W 49.9K		2.00	RX102, RX202
103	H-R18F-5763-1	RESISTOR F1/8W 57.6K		1.00	R205
104	H-R18F-6494-1	RESISTOR F1/8W 6.49K		1.00	R104
105	H-TR-1266GT-1	TR KTA1266GR	TP TYPE	1.00	Q4
106	H-TR-1266YT-1	TR KTA1266Y	TP TYPE	10.00	Q7, Q8, Q102, Q104, Q202, Q204, Q302, Q304,
107	H-TR-1266YT-1	TR KTA1266Y	TP TYPE	0.00	Q402, Q404,
108	H-TR-2316YT-1	TR KSC2316Y	TP TYPE	4.00	Q106, Q206, Q306, Q406
109	H-TR-3198GT-1	TP KTC3198GR	TP TYPE	1.00	Q3
110	H-TR-3198YT-1	TR KTC3198Y	TP TYPE	14.00	Q5, Q101, Q103, Q121, Q201, Q203, Q221, Q301,
111	H-TR-3198YT-1	TR KTC3198Y	TP TYPE	0.00	Q303, Q321, Q401, Q403, Q421, QX1
112	H-TR-916YT--1	TR KSA916Y	TP TYPE	5.00	Q105, Q205, Q305, Q405, Q6
113	H-TR-K30AT--1	TR K30A	TP TYPE	5.00	Q501, Q502, Q503, Q504, Q505
114	H-IC-4560L--1	IC NJM4560L SIP		4.00	IC2, IC4, IC6, IC8
115	H-SWS-2301--7	SW SL SK23E01G8 L3R1	2C3P 8MM	1.00	SW2
116	H-VR953B20--1	RTVR 3B20K 2GB	RV095GBC015RS3B20K	1.00	VR2
117	H-VR953B500-1	RTVR 3B500K 2GB	RV095GBC015RS3B500K	1.00	VR8
118	H-VR9543B20-1	RTVR 3B20K 4GB	RV0954GBCO15RS3B20K	1.00	VR6
119	H-VR9543B50-1	RTVR 3B50K 4GB	RV0954GBCO15RS3B50K	1.00	VR4
120	H-WIP-09A25T1	WAFER 9PIN 2.5 ANGLE	LAL0640-09	1.00	CON7

PART LIST(MR4.75)

* BUYER : DELTA

* MODEL : MR4.75

* CODE :

NO	CODE	NAME	STAN	Q'TY	REMARK
121	H-CER-18TCH-1	CER CAP 18PF CH	TP TYPE	1.00	C403
122	H-CER-39CHT-1	CER CAP 39P CH	TP TYPE	1.00	C303
123	H-CER-560T--1	CER CAP 560PF	TP TYPE	2.00	C302, C402
124	H-E47-16SR-T2	EC 47/16 5x7 SRJ	TP TYPE	2.00	CX1, CX2
125	H-JW-JUMPW06T	JUMP WIRE 0.6T		20.00	
126	H-MFB-104P5T1	CAP/M-FILM 104/63V	BOX FILM 104 TP TYPE	2.00	C311, C411
127	H-MFB-224P5T1	CAP/M-FILM 224/63V	BOX FILM 224 TP TYPE	4.00	C306, C308, C406, C408
128	H-MYR-103MT-2	MYLAR 103(0.01/50)	TP TYPE "J" MINI	4.00	C309, C310, C409, C410
129	H-MYR-563MT-2	MYLAR 563(0.056/50)	TP TYPE "J" MINI	2.00	C304, C404
130	H-MYR-823MT-2	MYLAR 823(0.082/50)	TP TYPE "J" MINI	4.00	C305, C307, C405, C407
131	H-PBS-9504FU2	VR PCB FU504VR	187x139x1.6t(1/3)XPC	1.00	COLOR:BLUE
132	H-R18-1003--1	RESISTOR 1/8W 100K		6.00	R313, R314, R315, R413, R414, R415
133	H-R18-103---1	RESISTOR 1/8W 10K		4.00	R310, R410, RX301, RX401
134	H-R18-1503--1	RESISTOR 1/8W 150K		2.00	R311, R411
135	H-R18-333---1	RESISTOR 1/8W 33K		3.00	R305, R312, R412
136	H-R18-474---1	RESISTOR 1/8W 4.7K		2.00	R308, R408
137	H-R18-564---1	RESISTOR 1/8W 5.6K		2.00	R306, R406
138	H-R18-680---1	RESISTOR 1/8W 680		2.00	R303, R403
139	H-R18F-1374-1	RESISTOR F1/8W 13.7K		2.00	R309, R409
140	H-R18F-4322-1	RESISTOR F1/8W 4.32K		2.00	R307, R407
141	H-R18F-4994-1	RESISTOR F1/8W 49.9K		2.00	RX302, RX402
142	H-R18F-5763-1	RESISTOR F1/8W 57.6K		1.00	R405
143	H-R18F-6494-1	RESISTOR F1/8W 6.49K		1.00	R304